

3. SEE SH1 FOR CODED NOTES.

(E) MALL BULKHEAD TO REMAIN

3 5/8" DIAG BRACE
SEE DETAIL A/503.01

G
503.01

RUNNER TRACK

362T162-33 TRACK w/
2-#10 S.M.S. at 16" o.c.,
TYP. INTO VERTICAL
STUD AS SHOWN

DBL STUD LINTEL,
SEE PLAN FOR SIZE

Ø15 7/8" DIA. POWDER ACTUATED
FASTENERS (MULTI X-U OR
EQUIVALENT) at 12" o.c., TYP
2 MIN. PER TRACK

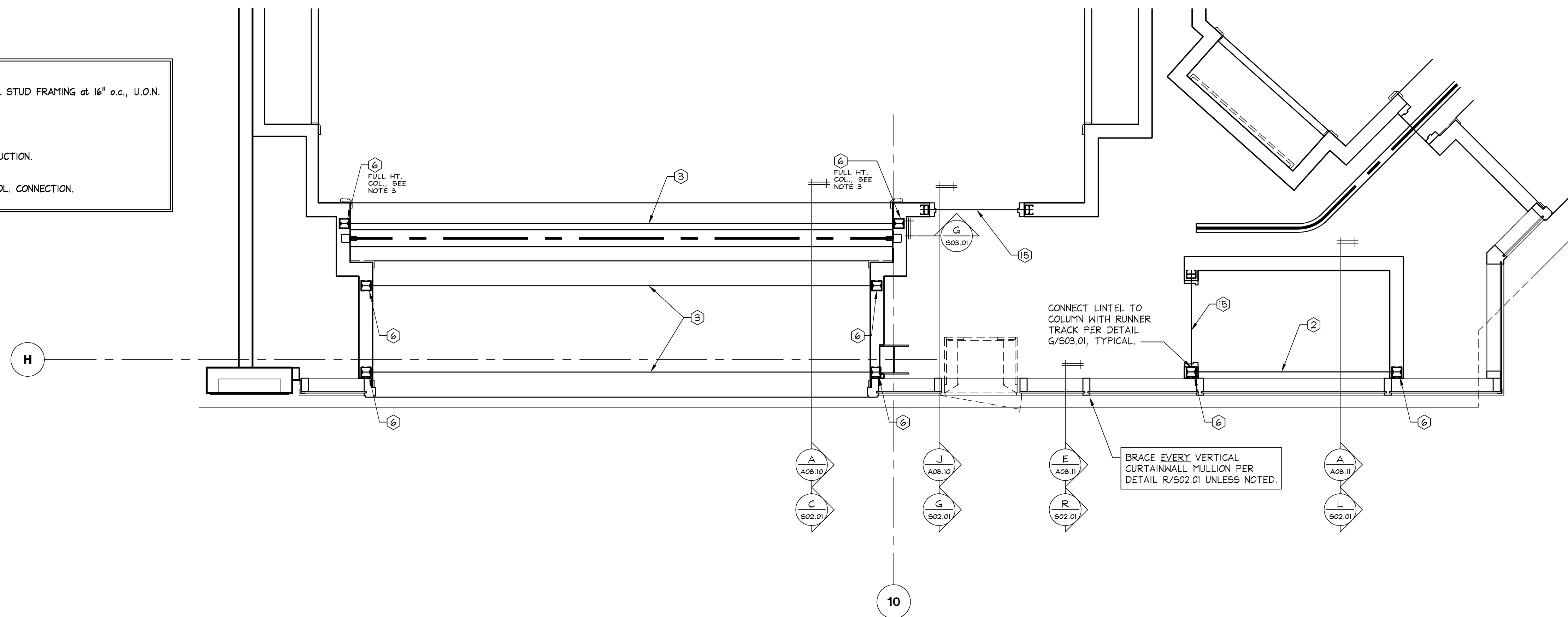
H

R

L

G

C



A

S02.01